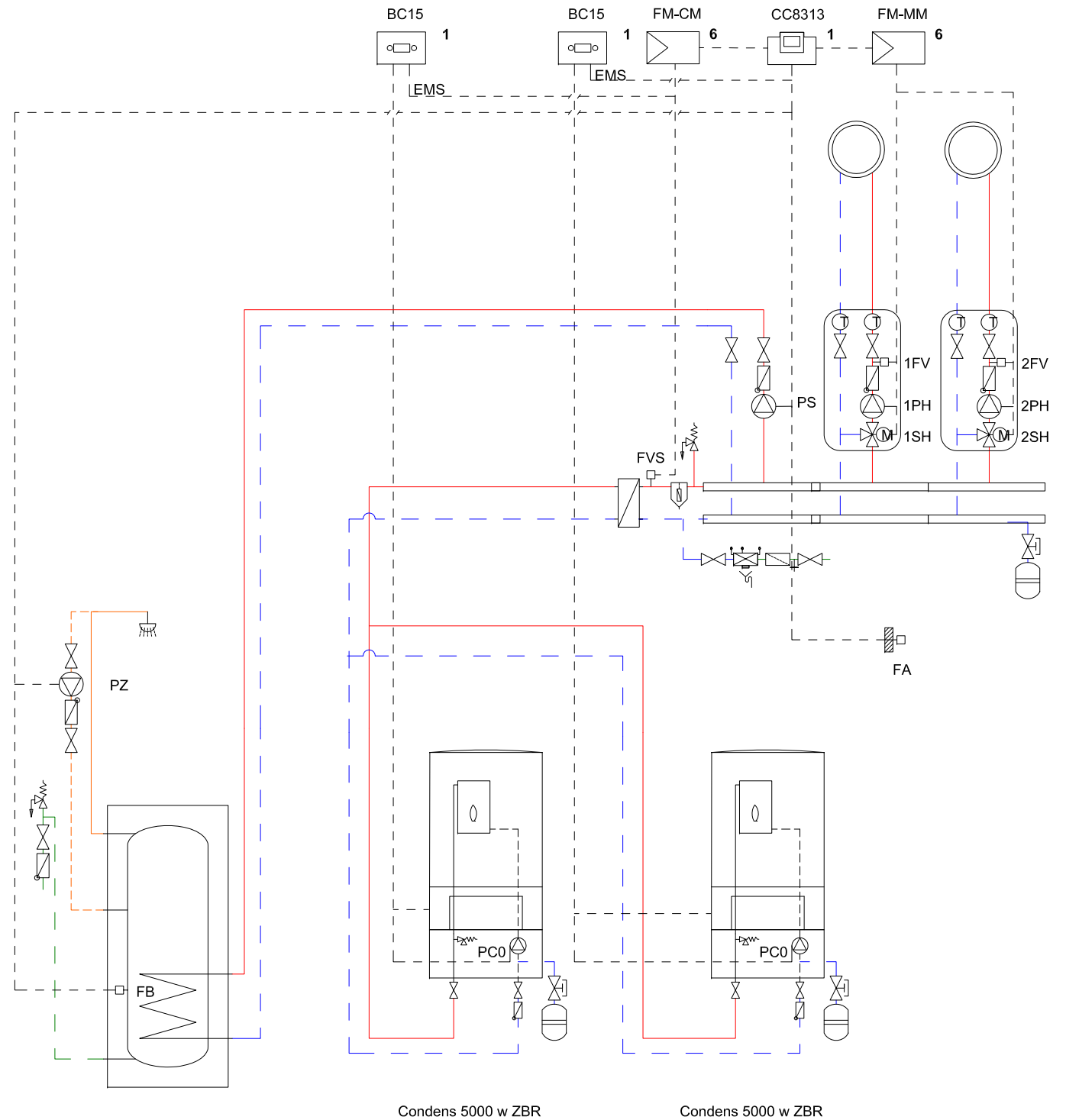


Module position:

- 1.1 On the heat/cooling source
- 2. On the heat/cooling source or on the wall
- 3. In the station
- 4. In the station or on the wall
- 5. On the wall
- 6. In the controller

The system schematic shown is a non-binding schematic diagram. The circuit diagram/connection diagram contains details on the electrical wiring. Observe national and regional regulations, technical rules and guidelines.



Condens 5000 w ZBR

Condens 5000 w ZBR

No.	6721836174
State	06.04.2021
Bosch	

Explanation of symbols

Symbol	Name	Symbol	Name	Symbol	Name
Pipework/cables					
	Flow - heating/solar		Brine return		DHW circulation
	Return - heating/solar		Potable water		Electrical wiring
	Brine flow		DHW		Electrical wiring with break
Mixing valves/valves/temperature sensors/pumps					
	Valve		Pressure differential controller		Pump
	Inspection bypass		Pressure relief valve		Non-return valve
	Flow regulating valve		Safety assembly		Temperature sensor/switch
	Pressure relief valve		3-way mixing valve (mixing/distribution)		Safety temperature limiter
	Filter shut-off valve		DHW mixer, thermostatic		Flue gas temperature sensor/switch
	Cap valve		3-way mixing valve (changeover)		Flue gas temperature limiter
	Valve, mechanically controlled		3-way mixing valve (change over, de-energised when closed to II)		Outside temperature sensor
	Valve, thermally controlled		3-way mixing valve (change over, de-energised when closed to A)		Wireless outside temperature sensor
	Shut-off valve, magnetically controlled		4-way mixing valve		...wireless...
Miscellaneous					
	Thermometers		Drain outlet with siphon		Low loss header with sensor
	Manometer		System separation according to EN1717		Heat exchanger
	Drain & fill valve		Expansion vessel with cap valve		Flow rate measuring device
	Water filter		Magnetite separator		Tundish
	Heat meter		Air separator		Heating circuit
	DHW outlet		Automatic air vent		Underfloor heating circuit
	Relay		Expansion joint		Low loss header
	Immersion heater				

Descriptions

- KR Flow-check valve
- PK Boiler circuit pump
- RK Return
- VK Flow
- VSL Safety flow
- SR Actuator, return temperature raising facility
- SV Pressure relief valve
- SK Boiler circuit actuator
- SH Heating circuit actuator
- VHK Heating circuit flowrate
- VPK Boiler circuit pump flow rate
- TWH Flow temperature limiter
- DV Throttle valve
- FA Outside temperature sensor
- FK Boiler temperature sensor
- FV Flow temperature sensor
- FB DHW temperature sensor
- FZ Auxiliary temperature sensor
- FVS Strategy sensor
- FR Return temperature sensor
- PK Boiler circuit pump
- PH Heating circuit actuator
- PS Cylinder primary pump
- PZ DHW circulation pump